

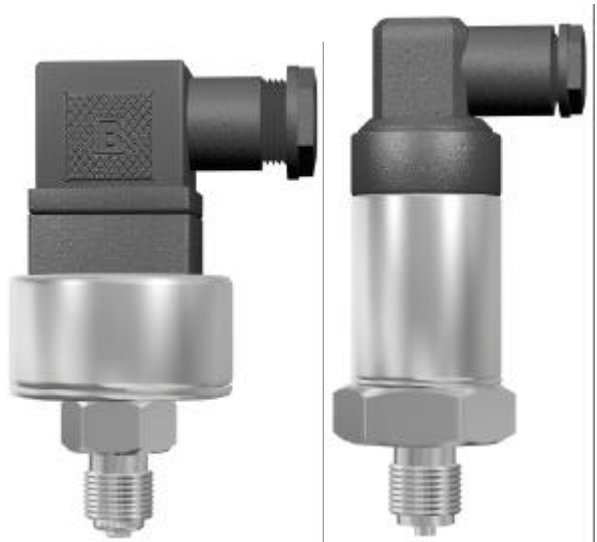
## General-purpose Pressure Transmitters PS

- ◆ **Low-cost**
- ◆ **Positive and negative gauge pressure**
- ◆ **Absolute pressure ranges**
- ◆ **Accuracy - up to 1%**
- ◆ **Ranges from 400 mBar up to 1000 Bar**

PS general-purpose pressure transmitters offered by COMECO Ltd. are produced by IMT-Germany or are OEM products assembled by COMECO using modules of IMT. The transmitters are based on the following sensitive elements:

- Piezoresistive
- Thin film (strain gauge) elements
- Hall sensor

The transmitters have built in electronics enclosed in the metal case providing standard linear temperature compensated signal proportional to measured pressure. The housing terminates with standard thread for connection to pipes and vessels. The range includes pressure sensors for absolute pressure, positive and negative gauge pressure and very low pressures [mBar] transmitters. Increased temperature and oils and fats resistant models are also available. Various pressure port connection adapters may be ordered. The general-purpose PS series includes models in the range from 400 mBar to 1000 Bar and accuracy from 1.6% to 1.0%. The PS transmitters are applicable in all areas where pressure has to be transformed in electrical signal for control, indication or recording.



PS

### Technical specifications

MODEL	Low-cost				Industrial - compact					
	3305	3306	3300	3310	3272	3373	3296	3296A	3396	
<b>Specifications</b>										
Pressure	Positive and/or negative gauge				Positive gauge			Gauge	Absolute	Positive gauge
Ranges to EN [Bar]	-1...600		-1...0.4...600		0.25...16	25...1000	1...10		16...1000	
Accuracy	1.6 %	typ. 1.6%	typ. 1%		1 %					
Pressure sensor type	Hall sensor				Piezoresistive	Thin film	Piezoresistive		Thin film	
Overload pressure	2x or 1.3x (>400 Bar)				3.5x(≤16 Bar); 2x(≤600 Bar); 1.5x(>600 Bar)			3.5x(≤10 Bar); 2x(≤600 Bar); 1.5x(>600 Bar)		
Output	4...20 mA, 0...10 V or 0...5 V				4...20 mA, 0...20 mA or 0...10 V			4...20 mA, 0...10 V or 1...5 V		
Case	Stainless steel 1.4301				Stainless steel					
Pressure connection	Brass: G1/4", 1/4"NPT		SS		Stainless steel: G1/4", G1/2", 1/4"NPT, 1/2"NPT					
Power supply	12 ... 30 VDC (ripple max. 10%)				10...30 VDC (14... 30 VDC - for 0...10 V output)					
Electrical connection	Connector DIN 43650				Connector G4A1MMT			Connector DIN 43650		
Medium temperature	-25 to +80 °C				-30 to +100 °C <i>Option:</i> -40 to +125 °C			-40 to +100 °C		
Ambient temperature	-25...+60 °C				-30...+85 °C			-30...+80 °C		
Protection class	IP 65	IP 43	IP 65		IP 65					

### Ordering code



PS★ - G3.G9.G11 - #1

Code	Feature or option	Code values
★	Model	Four-digit code from tables above
G3	Input range	0 to ± RANGE, where RANGE = 10, 16, 25, 40 or 60 x 10 <sup>n</sup> (applicable for the selected model)
G9	Pressure connection <sup>(1)</sup>	Q23 - G1/4", Q24 - NPT1/4", Q4 - G1/2", Q10 - NPT1/2", Z - other (specify!)
G11	Output signal	E - 0...20 mA, F - 4...20 mA, I - 0...5 V, J - 1...5 V, K - 0...10 V (applicable for the selected model)
#1	High temperature option	X - none, H1 - high temperature option (if applicable for the selected model)

<sup>(1)</sup> If applicable for the selected model