

Hyundai-Transas Integrated Bridge System

- *New Concept of Integration*
- *Multi-Functional Display System*
- *Provision for Future Flexibility*

HTIBS

Hyundai-Transas Integrated Bridge System



Features

Multi-Functional Display for navigational system on each workstation, comprising:

- ECDIS (with Track Control System)
- Radar / ARPA
- Navigational Information (Conning Display)
- Bridge Alarm Management System

Additional dedicated workstation displaying:

- E/R and cargo alarm/monitoring and control system (ACONIS-2000)
- Playback for Voyage Data Recorder (*hi*VDR)

Functionality of Master/Slave/Clear Slave

Redundant Navigational Equipment Integrator

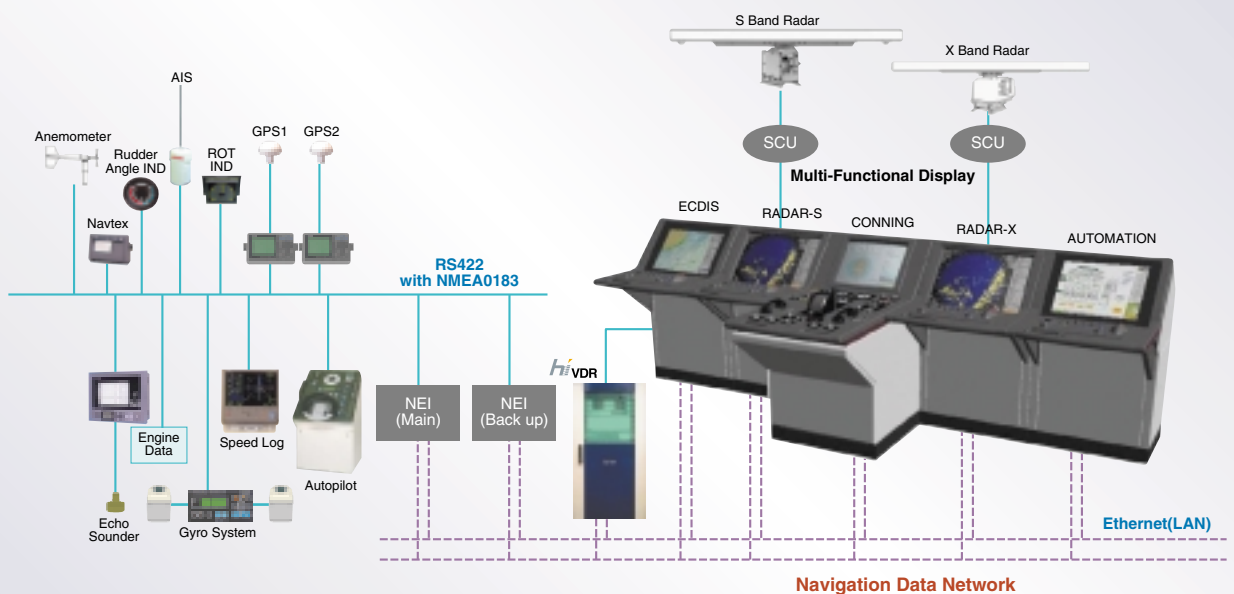
Integrated Voyage Data Recorder (*hi*VDR)

Integration of AIS data into ECDIS

23.1 TFT-LCD Displays

Designed in line with IEC requirements for INS (draft IEC61924)

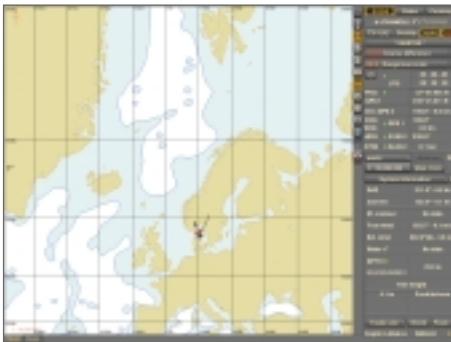
Configuration



Hyundai-Transas Integrated Bridge System

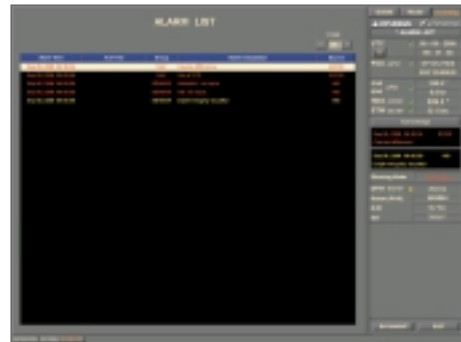


ECDIS with Track Control System



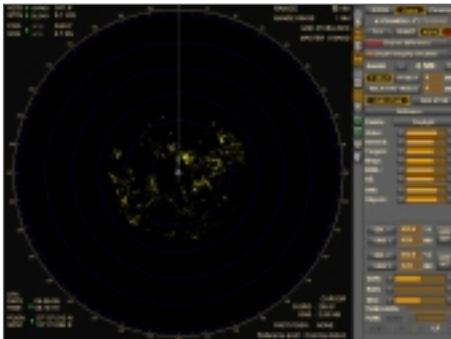
- Top quality and proven features of ECDIS
- Integration of AIS data (IEC62065 Track Control System)

Bridge Alarm Management System



- Centralized bridge alarm system
- Incorporated with Bridge Watch Alarm
- Compliant with LR IBS/DNV GAS notation

Radar / ARPA



- Fully IMO compliant ARPA/radar display
- High resolution display

E/R & Cargo Alarm/Monitoring & Control System



- Ballast and cargo system
- E/R machinery system

Navigational Information (Conning Display)



- Centralized navigational equipment information
- Compliant with DNV GAS/LR IBS notation

Playback for Voyage Data Recorder



- On-line playback from data management unit
- Off-line playback from storage capsule