

Hi VDR

Hyundai Intelligent Voyage Data Recorder





**Hyundai
Intelligent Voyage
Data Recorder**

hi VDR

Features

The **hi VDR**

- ▶ has been designed to exceed all relevant IMO and IEC requirements.
- ▶ provides amazing flexibility to customize with module base structure.
- ▶ allows easy front installation and maintenance with swing rack structure.
- ▶ gives visual satisfaction with graceful design.
- ▶ provides a user friendly playback software as option.



Hyundai Intelligent
Voyage Data Recorder

Hyundai Intelligent Voyage Data Recorder

Standard Function of **hi**VDR

Data Management Unit(HiDMU)

is a cabinet which includes Data Processor Unit(HiDPU), Navigational Equipment Integrator(HiNEI), audio and video signal collector, analog and digital signal collector and UPS.

- 16 NMEA Ports
- 16 Analogue Inputs(HiAI16)
- 16 Digital Inputs(HiDI16)
- Interface for One(1) Radar
- Interface for Two(2) VHF Radio Telephone
- Interface for Five(5) Microphones
- 2 Hours UPS(HiUPS)

Remote Alarm Module(HiRAM)

provides audible and visual alarms for the faulty conditions in the VDR and a remote emergency data save functionality. Also provides external relay output for annunciator.

Five(5) Indoor Microphones(HiMIC)

Protective Capsule(12 Hours Recording)

is a crash-survivable data storage medium, which is capable of retaining data for a period of at least 2 years following the termination of recording.

Optional Function of **hi**VDR

- User friendly Playback Software and PC
- Interface for second Radar or ECDIS
- Interface for third VHF Radio Telephone
- Four(4) additional Microphones including Outdoor Type(HiMIC-EX)
- Easy extendable Analog / Digital Input Module (Up to 64 Inputs)



Hyundai Intelligent Voyage Data Recorder
Voyage Data Recorder



Data Interface

The HiVDR continuously records the following data for 12 hours in accordance with IMO Res.861(20) and IEC 61996. Recommended data is listed as follows.

Navigation Data

- Data and Time(UTC)
- Rate of Turn
- Speed over Ground & Water
- Through Water Depth
- Main Alarms-the Status of All IMO Mandatory Alarms on the Bridge
- Engine Order and Response
- Ship's Position and Datum Reference
- Wind's Direction & Speed
- Heading Angle
- Rudder Order and Response

Image Data

- RADAR / ARPA

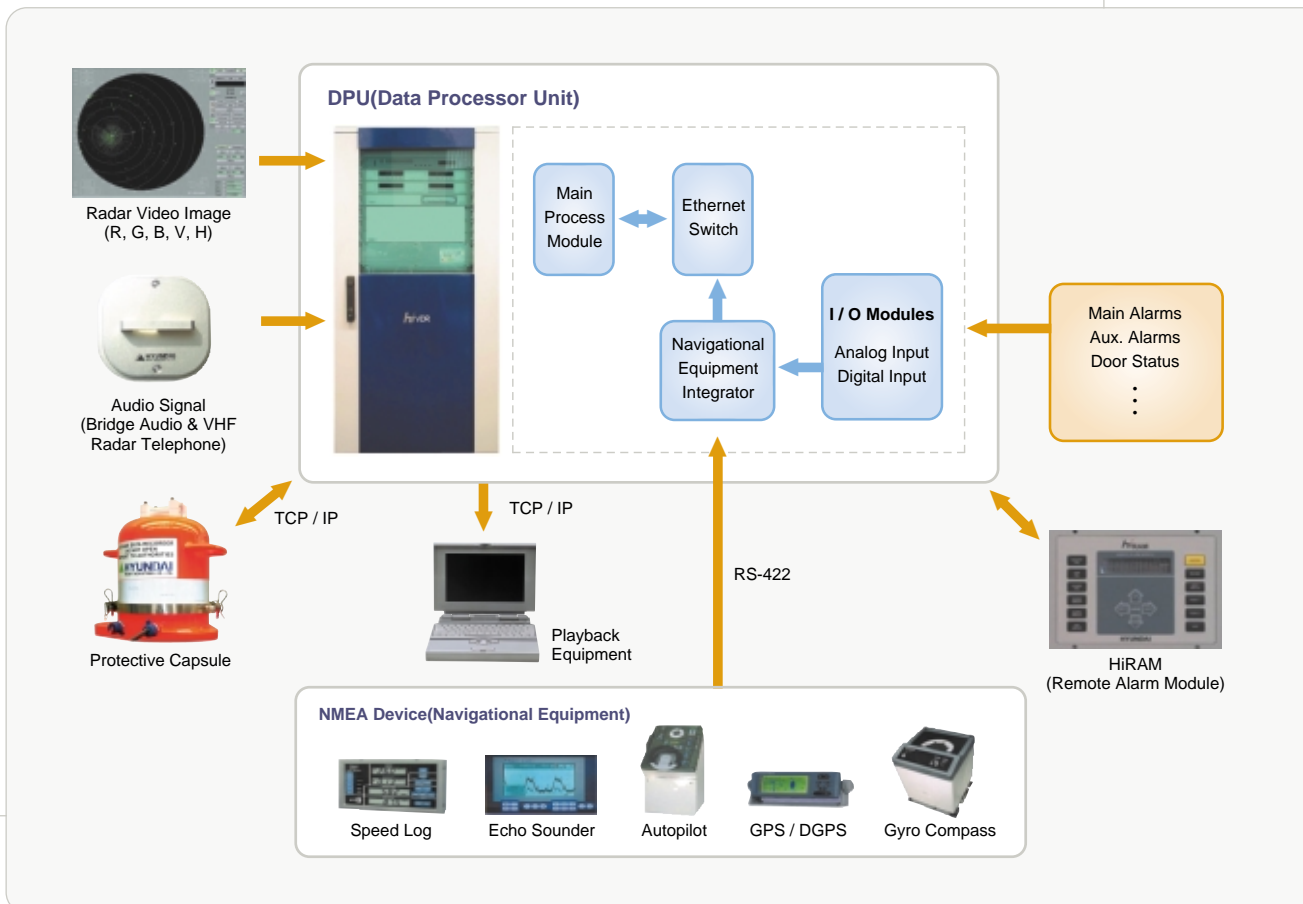
Voice Data

- Bridge Audio
- VHF Radio Telephone

Miscellaneous

- Hull Openings(Doors) Status
- Acceleration and Hull Stress
- Watertight and Fire Door Status

Configuration of hiVDR



Playback Software **HiVDR-PL**

Playback Software HiVDR-PL is supplied to allow immediate downloading, playback and real-time viewing of the stored data.

This software allows the customer to select a display of interest for playback.

The playback is fully interactive with features such as fast forward, rewind, pause and play speed.



Navigation

This navigation window consists of the several indication fields. All data from the sensor is displayed as a numeral in a proper field to analyze the situation easily.

Display Information

- Date and Time(UTC)
- Latitude & Longitude of Ship
- Heading Angle
- Rate of Turn
- Speed over Ground & Water
- Through Water Depth
- Rudder Order & Rudder Response
- Wind's Direction & Speed
- Engine / Thruster Information
- Mandatory Alarms

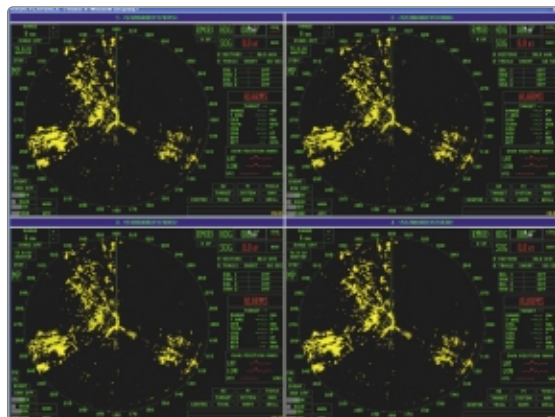


Image Data

HiVDR-PL provides 4 in 1 image window. This window replays the stored image data captured from Radar / ARPA, ECDIS and other equipment with visual image etc. User can enlarge the lasted image of the 4 to the full screen for better inspection.



Voice Data

The selectable audio group window not only provides audible voice signal from bridge microphones and VHF radios but also visual wave form. The data can be replayed by individual group or all group at the same time.