

## Overview



LOGO! logic modules

### More information

Homepage, see [www.siemens.com/LOGO](http://www.siemens.com/LOGO)

Industry Mall, see [www.siemens.com/product?logo](http://www.siemens.com/product?logo)

LOGO!, see Catalog ST 70 "Products for Totally Integrated Automation"

To download brochures, see [www.siemens.com/simatic/printmaterial](http://www.siemens.com/simatic/printmaterial)

- The compact, user-friendly, and low-cost solution for simple control tasks
- Compact, user-friendly, can be used universally without accessories
- All in one: The display and operator panel are integrated
- 36 different functions can be linked at a press of a button or with PC software; up to 130 times in total
- LOGO! 8: 38/43 different functions can be linked at a press of a button or with PC software; up to 200/400 times in total
- Functions can be changed simply with the press of a button. No complicated rewiring

## Application

The LOGO! logic module is the user-friendly, low-cost solution for simple control tasks.

LOGO! is universally applicable, e.g.:

- Building installation and wiring (lighting, shutters, awnings, doors, access control, barriers, ventilation systems, etc.)
- Control cabinet installation
- Machine and device construction (pumps, small presses, compressors, hydraulic lifts, conveyors, etc.)
- Special controls for conservatories and greenhouses
- Signal preprocessing for other controllers

LOGO! Modular logic modules can be expanded easily for each application.

### Marine approvals

American Bureau of Shipping, Bureau Veritas, Det Norske Veritas, Germanischer Lloyd, Lloyds Register of Shipping, Polski Rejestr Statków, etc.

## LOGO! Logic Modules

### LOGO! Modular basic versions

#### Overview



LOGO! Modular basic versions

- The space-saving basic versions
- Interface for connecting expansion modules, max. 24 digital inputs, 20 digital outputs, 8 analog inputs and 8 analog outputs can be addressed
- All basic units with integrated web server
- Enclosure width 72 mm (4 MW)
- All basic units with Ethernet interface for communication with LOGO! 8, LOGO! TDE, SIMATIC Controllers, SIMATIC Panels and PCs
- Use of standard micro SD cards

#### Selection and ordering data

Version	SD	Screw terminals	⊕	PU (UNIT, SET, M)	PS*	PG
	d	Article No.	Price per PU			
<b>LOGO! 8 logic modules</b>						
<b>LOGO! logic module 24CE</b> Control supply voltage 24 V DC, 8 digital inputs 24 V DC, of which 4 can be used as analog inputs (0 ... 10 V), 4 digital outputs 24 V DC, 0.3 A, with integrated time switch, Ethernet interface, 400 function blocks can be combined, modular expandability	1	<b>6ED1052-1CC01-0BA8</b>		1	1 unit	200
<b>LOGO! logic module 12/24RCE</b> Control supply voltage 12/24 V DC, 8 digital inputs 12/24 V DC, of which 4 can be used as analog inputs (0 ... 10 V), 4 relay outputs 10 A, integrated time switch, Ethernet interface, 400 function blocks can be combined, modular expandability	1	<b>6ED1052-1MD00-0BA8</b>		1	1 unit	200
<b>LOGO! logic module 24RCE</b> Control supply voltage 24 V AC/DC, 8 digital inputs 24 V AC/DC, 4 relay outputs 10 A, integrated time switch, Ethernet interface, 400 function blocks can be combined, modular expandability	1	<b>6ED1052-1HB00-0BA8</b>		1	1 unit	200
<b>LOGO! logic module 230RCE</b> Control supply voltage 115 ... 230 V AC/DC, 8 digital inputs 115 ... 230 V AC/DC, 4 relay outputs 10 A, integrated time switch, Ethernet interface, 400 function blocks can be combined, modular expandability	1	<b>6ED1052-1FB00-0BA8</b>		1	1 unit	200

For accessories, see page 10/33 onwards.

## Overview



LOGO! Modular Pure version

- The cost-optimized basic versions
- Interface for connecting expansion modules, max. 24 digital inputs, 20 digital outputs, 8 analog inputs and 8 analog outputs can be addressed
- With connection option for LOGO! TDE text display
- All basic units with integrated web server
- Enclosure width 72 mm (4 MW)
- All basic units with Ethernet interface for communication with LOGO! 8, LOGO! TDE, SIMATIC Controllers, SIMATIC Panels and PCs
- Use of standard micro SD cards

## Selection and ordering data

Version	SD	Screw terminals	⊕	PU (UNIT, SET, M)	PS*	PG
	d	Article No.	Price per PU			
<b>LOGO! 8 logic modules</b>						
<b>LOGO! logic module 24CEo</b> Control supply voltage 24 V DC, 8 digital inputs 24 V DC, of which 4 can be used as analog inputs (0 ... 10 V), 4 digital outputs 24 V DC, 0.3 A; integrated time switch, Ethernet interface, without display or keyboard, 400 function blocks can be combined, modular expandability	1	<b>6ED1052-2CC01-0BA8</b>		1	1 unit	200
<b>LOGO! logic module 12/24RCEo</b> Control supply voltage 12 ... 24 V DC, 8 digital inputs 12 ... 24 V DC, of which 4 can be used as analog inputs (0 ... 10 V), 4 relay outputs 10 A, integrated time switch, Ethernet interface, without display or keyboard, 400 function blocks can be combined, modular expandability	1	<b>6ED1052-2MD00-0BA8</b>		1	1 unit	200
<b>LOGO! logic module 24RCEo</b> Control supply voltage 24 V AC/DC, 8 digital inputs 24 V AC/DC, 4 relay outputs 10 A, integral time switch, Ethernet interface, without display or keyboard, 400 function blocks can be combined, modular expandability	1	<b>6ED1052-2HB00-0BA8</b>		1	1 unit	200
<b>LOGO! logic module 230RCEo</b> Control supply voltage 115 ... 230 V AC/DC, 8 digital inputs 115 ... 230 V AC/DC, 4 relay outputs 10 A, integrated time switch, Ethernet interface, without display or keyboard, 400 function blocks can be combined, modular expandability	1	<b>6ED1052-2FB00-0BA8</b>		1	1 unit	200

For accessories, see page 10/33 onwards.

# LOGO! Logic Modules

## LOGO! Modular expansion modules

### Overview



- Expansion modules for connection to LOGO! Modular
- With digital inputs and outputs, analog inputs or analog outputs

LOGO! Modular expansion modules

### Selection and ordering data

Version	SD	Screw terminals	⊕	PU (UNIT, SET, M)	PS*	PG
	d	Article No.	Price per PU			
<b>LOGO! 8 expansion modules</b>						
<b>LOGO! DM8 24</b> Control supply voltage 24 V DC, 4 digital inputs 24 V DC, 4 digital outputs 24 V DC, 0.3 A	1	<b>6ED1055-1CB00-0BA2</b>		1	1 unit	200
<b>LOGO! DM16 24</b> Control supply voltage 24 V DC, 8 digital inputs 24 V DC, 8 digital outputs 24 V DC, 0.3 A	1	<b>6ED1055-1CB10-0BA2</b>		1	1 unit	200
<b>LOGO! DM8 12/24R</b> Control supply voltage 12 ... 24 V DC, 4 digital inputs 12 ... 24 V DC, 4 relay outputs 5 A	1	<b>6ED1055-1MB00-0BA2</b>		1	1 unit	200
<b>LOGO! DM8 24R</b> Control supply voltage 24 V AC/DC, 4 digital inputs 24 V AC/DC, 4 relay outputs 5 A	1	<b>6ED1055-1HB00-0BA2</b>		1	1 unit	200
<b>LOGO! DM16 24R</b> Control supply voltage 24 V DC, 8 digital inputs 24 V DC, 8 relay outputs 5 A	1	<b>6ED1055-1NB10-0BA2</b>		1	1 unit	200
<b>LOGO! DM8 230R</b> Control supply voltage 115 ... 230 V AC/DC, 4 digital inputs 115 ... 230 V AC/DC, 4 relay outputs 5 A	1	<b>6ED1055-1FB00-0BA2</b>		1	1 unit	200
<b>LOGO! DM16 230R</b> Control supply voltage 115 ... 230 V AC/DC, 8 digital inputs 115 ... 230 V AC/DC, 8 relay outputs 5 A	1	<b>6ED1055-1FB10-0BA2</b>		1	1 unit	200
<b>LOGO! AM2</b> Control supply voltage 12 ... 24 V DC, 2 analog inputs 0 ... 10 V or 0 ... 20 mA, 10-bit resolution	1	<b>6ED1055-1MA00-0BA2</b>		1	1 unit	200
<b>LOGO! AM2 PT 100</b> Control supply voltage 12 ... 24 V DC, 2 analog inputs Pt100, temperature range -50 °C ... +200 °C	1	<b>6ED1055-1MD00-0BA2</b>		1	1 unit	200
<b>LOGO! AM2 AQ</b> Control supply voltage 24 V DC, 2 analog outputs 0 ... 10 V, 0/4 ... 20 mA	1	<b>6ED1055-1MM00-0BA2</b>		1	1 unit	200

For accessories, see page 10/33 onwards.

## LOGO! Logic Modules

### LOGO! Modular Communication Modules

#### LOGO! CMK2000 communication modules

#### Overview



LOGO! CMK2000 communication modules

- Expansion module for the LOGO! 8 basic versions
- For integration of LOGO! 8 in KNX installations
- 24 digital inputs, 20 digital outputs and 8 analog inputs and outputs each for processing of process signals via KNX

#### Information regarding compatibility:

LOGO! CMK2000 communication modules can be used with LOGO! ... 0BA8.

#### Application

With the LOGO! CMK2000 communication modules, the LOGO! 8 logic module series can be integrated in the KNX building system bus.

Designed for small-scale automation solutions, LOGO! 8 can be used in combination with the new communication module for building automation tasks, for example for monitoring, access control, air conditioning, lighting, shading and watering, even extending to pump control.

#### Selection and ordering data

Version	SD	Screw terminals	⊕	PU (UNIT, SET, M)	PS*	PG
	d	Article No.	Price per PU			
<b>LOGO! CMK2000 communication module</b>						
For integration of LOGO! 8 in the KNX building system bus, max. 50 communication objects can be configured; RJ45 port for Ethernet; supply voltage 24 V DC/40 mA	1	<b>6BK1700-0BA20-0AA0</b>		1	1 unit	470

For accessories, see page 10/33 onwards.

## LOGO! Logic Modules

### LOGO! Modular Communication Modules

#### LOGO! CSM unmanaged

##### Overview



LOGO! CSM unmanaged

The module is used for the connection of a LOGO! and up to three additional nodes to an Industrial Ethernet network with 10/100 Mbps in an electrical line, tree or star structure.

Key features of the LOGO! CSM are:

- Unmanaged 4-port switch, of which one port on the front side is for simple diagnostics access
- Two versions for the voltage ranges 12/24 V DC or 230 V AC/DC
- It is easy to connect via four RJ45 standard plug-in connections
- Space-saving, optimized for connection to LOGO!
- Economical solution for creating small, local Ethernet networks
- Stand-alone use for networking any number of Ethernet devices

Information regarding compatibility:

LOGO! CSM 12/24 communication modules can be used with LOGO! ...0BA7/...0BA8.

##### Benefits

- Savings on installation costs and installation space compared to using external network components
- Fast commissioning since configuring is not necessary
- Fast and uncomplicated diagnostics access in the control cabinet
- Flexible expansion of the network thanks to simple connection of the CSM

##### Application

LOGO! CSM is an Industrial Ethernet switch in a compact, modular design for use in devices of the new LOGO! generation with Industrial Ethernet connection. With the LOGO! CSM, the Ethernet interface of the SIMATIC LOGO! can be multiplied to enable simultaneous communication with control panels, programming devices, other controllers, or the office world.

External access (e.g. for diagnostics purposes) is possible without problems via the four Ethernet ports.

LOGO!CSM 12/24 (LOGO! 8 design)

For operation with direct current at 12 and 24 volts

##### Selection and ordering data

Version	SD	Screw terminals	⊕	PU (UNIT, SET, M)	PS*	PG
	d	Article No.	Price per PU			
<b>LOGO! CSM compact switch module</b>						
Unmanaged switch for connection to a LOGO! and up to three additional nodes in the Industrial Ethernet with 10/100 Mbps; 4 x RJ45 ports; LED diagnostics, LOGO! module						
<b>LOGO! CSM 12/24</b>	1	<b>6GK7177-1MA20-0AA0</b>		1	1 unit	5P1
External 12 V DC or 24 V DC power supply; for LOGO! ...0BA7/...0BA8						

For accessories, see page 10/33 onwards.

##### More information

###### Selection Tools

To assist in selecting the right Industrial Ethernet switches as well as in the configuration of modular variants, the SIMATIC NET Selection Tool and the TIA Selection Tool are available.

SIMATIC NET Selection Tool, see [www.siemens.com/snst-standalone](http://www.siemens.com/snst-standalone)

TIA Selection Tool, see [www.siemens.com/tia-selection-tool](http://www.siemens.com/tia-selection-tool)

#### Overview



LOGO! CMR

LOGO! CMR is suitable in combination with the LOGO! logic module as a low-cost remote signaling system for monitoring and controlling distributed plants and systems via text messages or email.

LOGO! CMR can send text messages or emails to predefined mobile network numbers and also receive text messages from predefined mobile network numbers.

Sending a text message/email can be initiated by events in the LOGO! basic module as well as by the two digital alarm inputs of the LOGO! CMR. The values in the LOGO! logic module can be directly influenced by receiving a text message.

The LOGO! CMR offers convenient commissioning and diagnostics via web-based management, via local and/or remote access.

The two digital outputs can also be connected remotely via incoming text messages/emails.

The LOGO! CMR determines the current position of the module using the GPS signal received via the GPS antenna. In addition, the LOGO! 8 logic module can also be synchronized by means of the time-of-day included in the GPS signal.

Further options for synchronizing the LOGO! BM with the current time-of-day are calculation of the time-of-day via an NTP server or from the data of the mobile wireless service provider.

#### Product versions

- LOGO! CMR2020 for use in GSM/GPRS mobile wireless networks
- LOGO! CMR2040 for use in LTE mobile wireless networks

#### Information regarding compatibility:

LOGO! CMR2020 and LOGO! CMR2040 can be used with LOGO! ...0BA8.

Caution! Observance of national mobile wireless approvals is mandatory:

[www.siemens.com/mobilenetwork-approvals](http://www.siemens.com/mobilenetwork-approvals)

#### Benefits

- Low-cost alarm signaling system – Low investment and operating outlay for the monitoring and control of small systems via text message and/or email
- Reduction of travel/maintenance costs thanks to remote access via OpenVPN and HTTP for configuring the LOGO! CMR or LOGO! 8 logic module
- Easy-to-use thanks to intuitive text messaging syntax with alias text messaging function or assignment and use of symbolic names
- Simple configuration process via Web Based Management without the need for special knowledge of radio communications
- Internationally deployable thanks to communication via GSM, UMTS, and LTE networks
- Time synchronization of the LOGO! 8 logic module using the time determined from the GPS signal, an NTP server or the time from the mobile radio provider
- Harmonizes with LOGO! 8 series with regard to functioning, design and structure
- Fast installation thanks to standard rail mounting

#### Application

##### In industrial environments


- Simple remote diagnostics and remote control tasks in LOGO! applications in the plant and machine environment, e.g. gate controls, ventilation systems, industrial water pumps, automatic dry feeders in agriculture
- Simple building automation including building equipment, e.g. for HVAC (Heating, Ventilation and Air Conditioning), pump controller
- Remote control and monitoring of, e.g. level, pressure, temperature, flow, and valve control in the water/wastewater industry
- Position monitoring in the logistics industry, e.g. for vehicles, refrigeration transporters, containers
- Simplest possible metering and energy management systems in distributed buildings controlled with LOGO!
- Design of systems for monitoring and controlling simple telecontrol stations

- Remote connection of distributed local controllers via LOGO!
- Remote control and monitoring of low-end machine controls (usually discrete logic)

##### In non-industrial environments

- Remote control and monitoring of automation tasks in domestic building and installation systems, e.g. stairway lighting, external lighting, awnings, shutters, shop window lighting
- Remote control of HVAC in dwellings, greenhouses, etc.

**LOGO! Logic Modules****LOGO! Modular Communication Modules****LOGO! CMR (mobile wireless communication)****Selection and ordering data**

Version	SD	<b>Screw terminals</b> 	PU (UNIT, SET, M)	PS*	PG
	d	Article No.	Price per PU		
<b>LOGO! CMR Communication Module Radio</b>					
Communication modules for connecting LOGO! ...0BA8 to a GSM/GPRS or LTE network; 1 x RJ45 port for Industrial Ethernet connection; 2 x digital input; 2 x digital output; read/write access to LOGO! variables; sending/receiving text messages; GPS position detection; time-of-day synchronization/forwarding with real-time clock; configuration and diagnostics via WEB interface; observe national approval!					
<b>LOGO! CMR2020</b> For connecting LOGO! ...0BA8 to GSM/GPRS networks	1	<b>6GK7142-7BX00-0AX0</b>		1	1 unit 5P1
<b>LOGO! CMR2040</b> For connecting LOGO! ...0BA8 to LTE network	5	<b>6GK7142-7EX00-0AX0</b>		1	1 unit 5P1

For accessories, [see page 10/33 onwards](#).

**More information****Selection Tools**

To assist in selecting the right Industrial Ethernet switches as well as in the configuration of modular variants, the TIA Selection Tool is available.

TIA Selection Tool, [see www.siemens.com/tia-selection-tool](#)



## Selection and ordering data

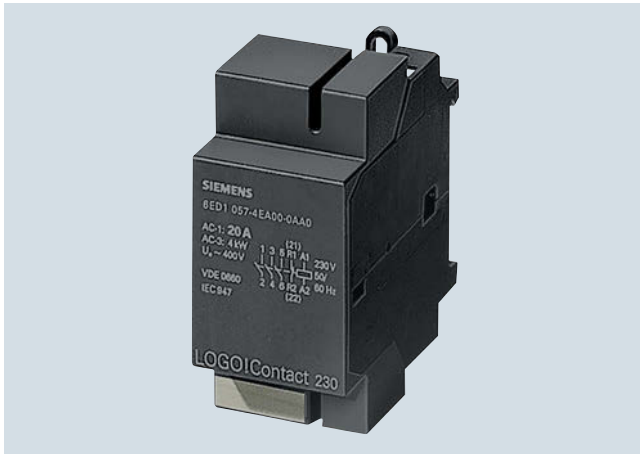
Version	SD	Article No.	Price per PU	PU (UNIT, SET, M)	PS*	PG
	d					
<b>Accessories for LOGO! 8</b>						
<b>LOGO! TD text displays</b>						
<b>LOGO! TDE text display</b> 6-line text display, can be connected to all LOGO! 8 Basic and LOGO! 8 Pure versions, with 2 Ethernet interfaces; including installation accessories <u>Note:</u> Requires additional 12 V DC power supply or 24 V AC/DC power supply.	1	<b>6ED1055-4MH00-0BA1</b>		1	1 unit	200
<b>LOGO! Software</b>						
<b>LOGO!Soft Comfort V8</b> For programming on the PC in LAD/FBD; runs on Windows 8, 7, XP, Linux and Mac OSX; on DVD	1	<b>6ED1058-0BA08-0YA1</b>		1	1 unit	200
<b>LOGO!Soft Comfort V8 Upgrade</b> Upgrade from V1.0 to V8, on DVD	1	<b>6ED1058-0CA08-0YE1</b>		1	1 unit	200
<b>LOGO! 8 Starter Kits</b>						
In TANOS box, with LOGO! 8, LOGO!Soft Comfort V8, WinCC Basic V13, Ethernet cable						
<b>LOGO! 8 12/24 V Starter Kit</b> With LOGO! 12/24 RCE, LOGO! Power 24 V 1.3 A	1	<b>6ED1057-3BA00-0AA8</b>		1	1 unit	2SP
<b>LOGO! 8 230 V Starter Kit</b> With LOGO! 230 RCE	1	<b>6ED1057-3BA02-0AA8</b>		1	1 unit	2SP
<b>LOGO! 8 TDE Starter Kit</b> With LOGO! 12/24 RCEO, LOGO! Power 24 V, 1.3 A, LOGO! TDE	1	<b>6ED1057-3BA10-0AA8</b>		1	1 unit	2SP
<b>LOGO! 8 KP300 Basic Starter Kit</b> With LOGO! 12/24 RCE, LOGO! Power 24 V 1.3 A, KP300 Basic mono PN	1	<b>6AV2132-0HA00-0AA1</b>		1	1 unit	2SP
<b>LOGO! 8 KP400 Basic Starter Kit</b> With LOGO! 12/24 RCE, LOGO! Power 24 V 1.3 A, KTP400 Basic	1	<b>6AV2132-0KA00-0AA1</b>		1	1 unit	2SP
<b>LOGO! 8 KTP700 Basic Starter Kit</b> With LOGO! 12/24 RCE, LOGO! Power 24 V 1.3 A, KTP700 Basic	1	<b>6AV2132-3GB00-0AA1</b>		1	1 unit	2SP
<b>Front panel assembly kits</b>						
<b>Front panel assembly kits</b>						
• Width: 4 MW	22	<b>6AG1057-1AA00-0AA0</b>		1	1 unit	470
• Width: 4 MW, with pushbuttons	22	<b>6AG1057-1AA00-0AA3</b>		1	1 unit	470
• Width: 8 MW	22	<b>6AG1057-1AA00-0AA1</b>		1	1 unit	470
• Width: 8 MW, with pushbuttons	22	<b>6AG1057-1AA00-0AA2</b>		1	1 unit	470
<b>Accessories for LOGO! CMS unmanaged</b>						
<b>SIMATIC NET cables</b>						
<b>IE TP Cord RJ45/RJ45</b> TP cable 4 x 2 with 2 RJ45 connectors						
• 0.5 m	1	<b>6XV1870-3QE50</b>		1	1 unit	5K1
• 1 m	1	<b>6XV1870-3QH10</b>		1	1 unit	5K1
• 2 m	1	<b>6XV1870-3QH20</b>		1	1 unit	5K1
• 6 m	1	<b>6XV1870-3QH60</b>		1	1 unit	5K1
• 10 m	1	<b>6XV1870-3QN10</b>		1	1 unit	5K1
<b>IE FC Outlet RJ45</b> For connection of Industrial Ethernet FC cables and TP cords; scaled pricing from 10 and 50 units	1	<b>6GK1901-1FC00-0AA0</b>		1	1 unit	5K1

## LOGO! Logic Modules

## Accessories

Version	SD	Article No.	Price per PU	PU (UNIT, SET, M)	PS*	PG
	d					
<b>Accessories for LOGO! CMR</b>						
<b>Mobile wireless antennas</b>						
<b>ANT794-4MR</b>	1	<b>6NH9860-1AA00</b>		1	1 unit	5T1
Resistant in the indoor and outdoor areas; 5 m connection cable permanently connected to the antenna; SMA connector, including mounting bracket, screws, plugs						
<b>ANT896-4MA</b>	1	<b>6GK5896-4MA00-0AA3</b>		1	1 unit	5M2
Rod antenna for mounting directly on the device; SMA male connector						
<b>ANT896-4ME</b>	1	<b>6GK5896-4ME00-0AA0</b>		1	1 unit	5M2
Cylindrical antenna for detached mounting, e.g. on a control cabinet; N-Connect female connector						
<b>GPS antennas</b>						
<b>ANT895-6ML</b>	1	<b>6GK5895-6ML00-0AA0</b>		1	1 unit	5M2
GPS/Glonass antenna for detached mounting in the indoor and outdoor areas, magnetic holder or screw holder, cable 30 cm with N-Connect female connector						
<b>Antenna adapter cable</b>						
N-Connect/SMA male/male flexible connection cable, pre-assembled connecting cable; suitable from 0 ... 6 GHz, IP68						
• 0.3 m	1	<b>6XV1875-5LE30</b>		1	1 unit	5M2
• 1 m	1	<b>6XV1875-5LH10</b>		1	1 unit	5M2
• 2 m	1	<b>6XV1875-5LH20</b>		1	1 unit	5M2
• 5 m	1	<b>6XV1875-5LH50</b>		1	1 unit	5M2
<b>IWLAN RCoax/antenna N-Connect male/male flexible connection cable</b>						
Flexible connection cable for connecting an RCoax cable or an antenna to a SCALANCE W-700 access point with N-Connect terminals; assembled with two connectors N-Connect male; suitable from 0 ... 6 GHz, IP68						
• 1 m	1	<b>6XV1875-5AH10</b>		1	1 unit	5W3
• 2 m	1	<b>6XV1875-5AH20</b>		1	1 unit	5W3
• 5 m	1	<b>6XV1875-5AH50</b>		1	1 unit	5W3
• 10 m	1	<b>6XV1875-5AN10</b>		1	1 unit	5W3
<b>Control cabinet bushing</b>						
IWLAN RCOAX N-Connect/N-Connect female/female panel feedthrough; cabinet bushing for panel thicknesses up to 4.5 mm; 2.4 GHz and 5 GHz, suitable from 0 ... 6 GHz, IP67						
<b>LP798-2N lightning protector</b>	1	<b>6GK5798-2LP00-2AA6</b>		1	1 unit	5W3
Lightning protector with N/N female/female connector for the antennas ANT 790, IP67 (-40 ... +85 °C), frequency range: 0 ... 6 GHz						
<b>Patch cables</b>						
<b>IE TP Cord RJ45/RJ45</b>						
TP cable 4 x 2 with 2 RJ45 connectors						
• 0.5 m	1	<b>6XV1870-3QE50</b>		1	1 unit	5K1
• 1 m	1	<b>6XV1870-3QH10</b>		1	1 unit	5K1
• 2 m	1	<b>6XV1870-3QH20</b>		1	1 unit	5K1
• 6 m	1	<b>6XV1870-3QH60</b>		1	1 unit	5K1
• 10 m	1	<b>6XV1870-3QN10</b>		1	1 unit	5K1
<b>IE FC Outlet RJ45</b>	1	<b>6GK1901-1FC00-0AA0</b>		1	1 unit	5K1
For connection of Industrial Ethernet FC cables and TP cords; scaled pricing from 10 and 50 units						

## Overview



LOGO!Contact

Switching module for switching resistive loads and motors directly

## Application

LOGO!Contact is a switching module for direct switching of resistive loads (up to 20 A) and motors (up to 4 kW). LOGO!Contact operates hum-free without noise pollution.

LOGO!Contact is universally applicable:

- Buildings/electrical installations
- Industry and commerce

## Selection and ordering data

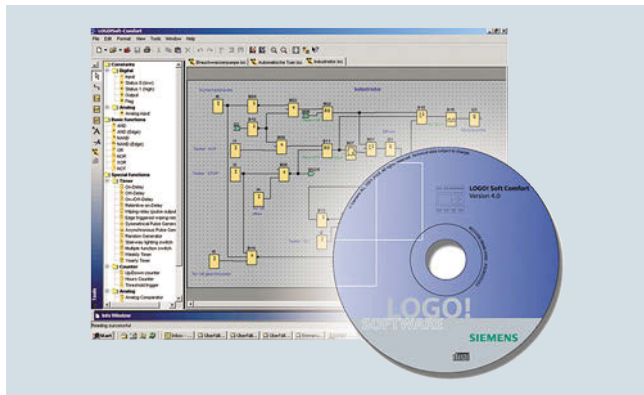
Version	SD	Screw terminals	PU (UNIT, SET, M)	PS*	PG
	d	Article No.	Price per PU		
<b>LOGO!Contact</b>					
Switching module for direct switching of resistive loads up to 20 A and motors up to 4 kW					
Switching voltage:					
• 24 V					
• 230 V					
	1	<b>6ED1057-4CA00-0AA0</b>		1	1 unit 200
	1	<b>6ED1057-4EA00-0AA0</b>		1	1 unit 200

For accessories, see page 10/33 onwards.

# LOGO! Logic Modules

## LOGO! Software

### Overview



#### LOGO!Soft Comfort

- The user-friendly software for switching program generation on the PC for single mode and network mode
- Switching program generation for function diagrams (FBD) or contact diagrams (LAD)
- Additional testing, simulation, online testing and archiving of the switching programs
- Professional documentation with the help of various comment and print functions

The connection between LOGO! and the PC is made with the LOGO! PC cable (serial interface) or the LOGO! USB PC cable (USB interface).

With LOGO! 0BA7 and LOGO! 8, the connection is made via the integrated Ethernet interface.

#### Minimum system requirements

Windows XP (32-bit), 7 (32/64-bit) or 8 (32/64-bit)

- PC Pentium IV
- 150 MB free on hard disk
- 256 MB RAM
- SVGA graphics card with minimum resolution of 800 x 600 (256 colors)
- DVD ROM

#### Mac OS X

- Mac OS X 10.4

#### Linux

- Tested with SUSE Linux 11.3 SP2, Kernel 3.0.76
- Runs on all Linux distributions on which Java 2 runs.
- For hardware requirements, [please consult your Linux release](#).

### Application

LOGO!Soft Comfort is the multilingual software for switching program generation with LOGO! on the PC. LOGO!Soft Comfort can be used to program all devices of the LOGO! family.

### Selection and ordering data

Version	SD	Article No.	Price per PU	PU (UNIT, SET, M)	PS*	PG
	d					
<b>LOGO!Soft Comfort</b>						
<b>LOGO!Soft Comfort V8</b>	1	<b>6ED1058-0BA08-0YA1</b>		1	1 unit	200
For programming on the PC in LAD/FBD; runs on Windows 8, 7, XP, Linux and Mac OSX; on DVD						
<b>LOGO!Soft Comfort V8 Upgrade</b>	1	<b>6ED1058-0CA08-0YE1</b>		1	1 unit	200
Upgrade from V1.0 to V8.0						